



MARLINTINI



1999 VIKING

LOA: 60' (18.29m)
Beam: 17' 11" (5.46m)
Speed: Cruising 26 Knots
Max 30 Knots

VAT Paid:

Build/Model Year: 1999 / 1999

Builder: VIKING

Type: Motor Yacht
Cockpit

Price: \$449,999 USD

Location: Fort Lauderdale, Florida
United States

Peck Yachts
2866 NE 29th Street
Fort Lauderdale, Florida 33306
United States

P: +1-954-224-1351
info@peckyachts.com
www.peckyachts.com

MARLINTINI

Additional Specifications For MARLINTINI:

LOA:	60' (18.29m)	Delivery/Model	1999
Beam:	17' 11" (5.46m)	Year:	
Hull Material:	Fiberglass	Year Built:	1999
Hull Config:	Modified V-Hull	Builder:	VIKING
Speed:	Cruising 26 Knots Max 30 Knots	Type:	Motor Yacht Cockpit
Fuel Capacity:	1300 Gal	Engines:	1050 HP,Twin, MAN, D2840LE403,
Water Capacity:	200 Gal	Staterooms:	3
Holding Tank:	100 Gal	Heads:	3
Flag:	United States	Captain Cabin:	No
Location:	Fort Lauderdale, Florida United States	Classifications:	
Price:	\$449,999 USD	MCA: ISM:	

Broker Description

Marlintoni is a fine example of Viking Yacht's outstanding quality and design! Featuring 3 staterooms, 3 heads, a spacious full-beam master stateroom, large VIP guest stateroom, impressive main salon and open galley. An air conditioned and enclosed aft deck and air conditioned flybridge gives the yacht owner the sense of a much larger yacht, but with the size and sensibilities of an owner/operator managed 60' class cockpit motoryacht. Combined with fuel efficient 4stroke MAN diesels, Marlintoni provides cruising speeds in the range of 26 knots topping out at approximately 30 knots! Owned and cared for by an experienced yachtsman, Marlintoni is the one to see!

Accommodations and Layout

The VIP Guest Stateroom is located forward and features a walk-around queen bed and private head with stall shower. Aft to starboard is the second guest head, which also serves as the day head, followed by the second guest stateroom with upper and lower berths. Aft of the VIP, to port, and across from the second guest stateroom, are the separate washer and dryer.

Aft and up three steps to the main salon with galley and dinette, the U-shaped galley is forward to port, and the dinette is across from the galley to starboard. The salon features an Lshaped sofa with table at the aft port corner, clear plastic carpet covers, Silhouette blinds with lambrequins, indirect lighting and an Icom ICM59 VHF radio. The main AC and DC breaker panels are located at the aft starboard corner of the salon.

Aft and down from the main salon is the entry to the spacious full beam engine room, followed by the full beam Master Stateroom with private head with stall shower, lighted vanity, night stands, lamps, HD Direct TV, stereo, satellite phone, A/C controls, two hanging lockers and numerous drawers and lockers for storage. Sunbrella beige canvas carpet covers throughout, except for clear plastic in salon.

Aft and up from the main salon is the enclosed and air conditioned aft deck area, with L-Settee aft to port, carpeting, entertainment center forward, table with chairs to starboard and chest freezer. From the aft deck, go forward and up to the enclosed and air conditioned flybridge and aft and down to the line handling deck and cockpit area. Aft deck wing doors open to the walkaround side decks, leading to the foredeck and tender stowage.

Galley

The low profile, open U-shaped galley is located at the forward port corner of the main salon.

- Hot and Cold Pressure Water System
- Large Franke Molded Sink with Garbage Disposal
- Corian Molded Counter Tops
- Stainless Side-By-Side Refrigerator with Ice Maker (NEW)
- Five Stage Reverse Osmosis Faucet - linked to refrigerator and ice maker
- Princess 2 Burner Electric Cook Top, Recessed
- Sharp Carousel Microwave/Convection Oven
- U-Line Clear Ice Machine
- Kenmore Washer and Dryer at Forward Companionway
- Ice Maker/Refrigerator at Aft Deck Entertainment Center

Peck Yachts

**2866 NE 29th Street
Fort Lauderdale, Florida 33306
United States**

**P: +1-954-224-1351
info@peckyachts.com
www.peckyachts.com**

MARLINTINI

Electronics and Navigation

The flybridge helm is enclosed and air conditioned and features Stidd pedestal helm and companion chairs and an L-shaped lounge at the aft port corner.

- Satellite TV and Telephone
- Intellian TV
- Garmin
- Northstar 961XD Color Plotter
- Northstar 951X Color Plotter
- Simrad Anritsu Radar
- Furuno FCV1100L Color LCD Depth Recorder
- Raytheon ST60 TriData
- Simrad Robertson AP20 Autopilot
- Ritchie Powerdamp Compass
- SEA 156 VHF Radios (2)
- Standard Horizon and Antennas
- Seahail Hailer
- EPIRB
- Fusion Stereo and Speakers on Flybridge
- (3) Vizio flat screen TV's and Sony DVR

Deck Equipment and Gear

- Air Conditioned Flybridge with Custom Hard Enclosure
- Stidd Pedestal Mount Helm and Companion Seats
- Windshield Wipers with Washers
- Electric Opening Windshield Vents
- Walk-Around Side Decks with Non-Skid
- Anodized Aluminum Life Rails
- Powder Coated Grab Rails to Foredeck
- Wing Doors to Aft Deck Area
- Air Conditioned Aft Deck with Hard Enclosure
- LSettee at Aft Port Corner of Aft Deck
- Aft Deck Carpeting and Privacy Curtains
- Aft Deck Entertainment Center with New Aft Deck TV (2021)
- ULine IceMaker/Refrigerator and Sink
- Bow Pulpit with Anchor Chute
- Lewmar Windlass (2021)
- Cockpit with Transom Gate and Swim Platform
- Tackle Stowage Lockers, Rod Holders and Step Box
- Hand Held Shower in Aft Cockpit
- Marquipt Tide Ride Boarding Stairs & Side Step
- Marquipt Folding Box Davit at Foredeck
- Boston Whaler 13 Super Sport Dinghy
- ACR RCL100 Remote Search Light
- Cockpit Canopy
- Aft Cockpit Sunshade

Peck Yachts

**2866 NE 29th Street
Fort Lauderdale, Florida 33306
United States**

**P: +1-954-224-1351
info@peckyachts.com
www.peckyachts.com**

MARLINTINI

Electrical Equipment

- 110/220 volt AC System and 12/24 volt DC System
- 10 Batteries (NEW 2023)
- Breaker Panels for All AC and DC Circuits
- Onan 20 kw Generator with Sound Enclosure (3,400 hours)
- 12 volt and 24 volt Automatic Chargers (New 2023)
- Cablemaster 50 amp Shore Power Inlet (2)
- C-Power Iso Boost 50 Isolation/Boost Transformer
- KVH Inmarsat Tracphone

Mechanical Equipment

- 1998 Twin MAN D2840le403 1050 HP (Overhaul 2023)
- Bow Thruster
- Boat Leveler Trim Tabs
- Cruisair Reverse Cycle A/C Throughout (6) New Aft Deck Compressor, New Twin Stateroom Compressor, New Salon Compressor (2022 and 2023)
- SMX II Digital A/C Control Panels
- VacuFlush Electric Heads (3) (Rebuilt Replaced Hoses, Pumps, Macerators 2022)
- Electrical Engine Synchronizer
- Engine Oil Transfer System
- Fresh Water Pump System (New 2021)
- Central Vacuum System
- Racor Fuel/Water Separators
- Hynautic Hydraulic Engine Controls
- Fluorescent Lighting in Engine Room
- Engine Control Panels with Mechanical Gauges
- Systems Monitor at Helm Engine Alarms at Helm
- Halon Fire Suppression System, Engine Room and Lazarette (Serviced 2023)
- Bottom Paint and Zincs (8/2022)
- Watermaker GPD400 Reverse Osmosis Watermaker System

Exclusions

Exclusions are to include but are not limited to, owner's personal belongings and tender. A detailed list of exclusions to be provided to buyer upon written request at time of sale.

EIAPP Certificates do not convey with the sale of this boat.

Disclaimer

The Company offers the details of this vessel in good faith but cannot guarantee or warrant the accuracy of this information nor warrant the condition of the vessel. A buyer should instruct his agents, or his surveyors, to investigate such details as the buyer desires validated. This vessel is offered subject to prior sale, price change, or withdrawal without notice.

Bow



Bow



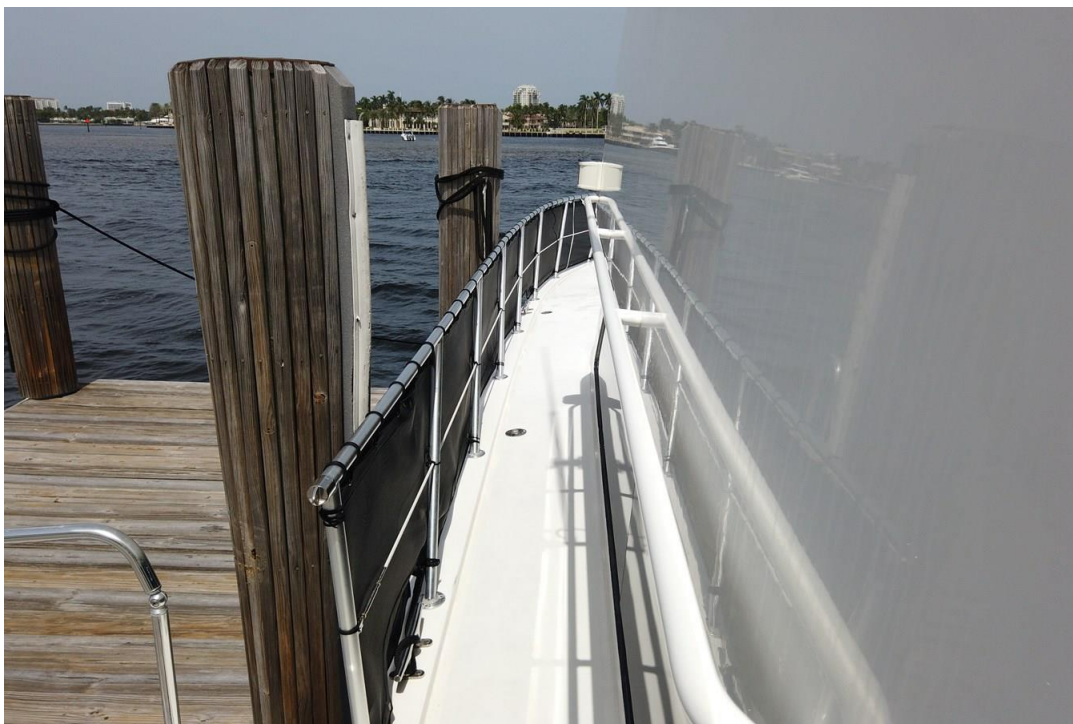
Port Side Aft



Starboard Side Aft



Port Side walkaround



Starboard Side Walkaround



Safety Netting



Stern View with Canopy



Tide Ride Ladder



Cockpit



Upper Salon



Upper Salon



Upper Salon



Upper Salon



Upper Salon Entertainment



Stairs to Helm



Bridge Seating



Helm Chairs



Peck Yachts
2866 NE 29th Street
Fort Lauderdale, Florida 33306
United States

P: +1-954-224-1351
info@peckyachts.com
www.peckyachts.com

MARLINTINI

Helm Chairs



Helm



Helm



Lower Salon



Peck Yachts
2866 NE 29th Street
Fort Lauderdale, Florida 33306
United States

P: +1-954-224-1351
info@peckyachts.com
www.peckyachts.com

MARLINTINI

Lower Salon



Lower Salon Seating



Peck Yachts
2866 NE 29th Street
Fort Lauderdale, Florida 33306
United States

P: +1-954-224-1351
info@peckyachts.com
www.peckyachts.com

MARLINTINI

Entertainment



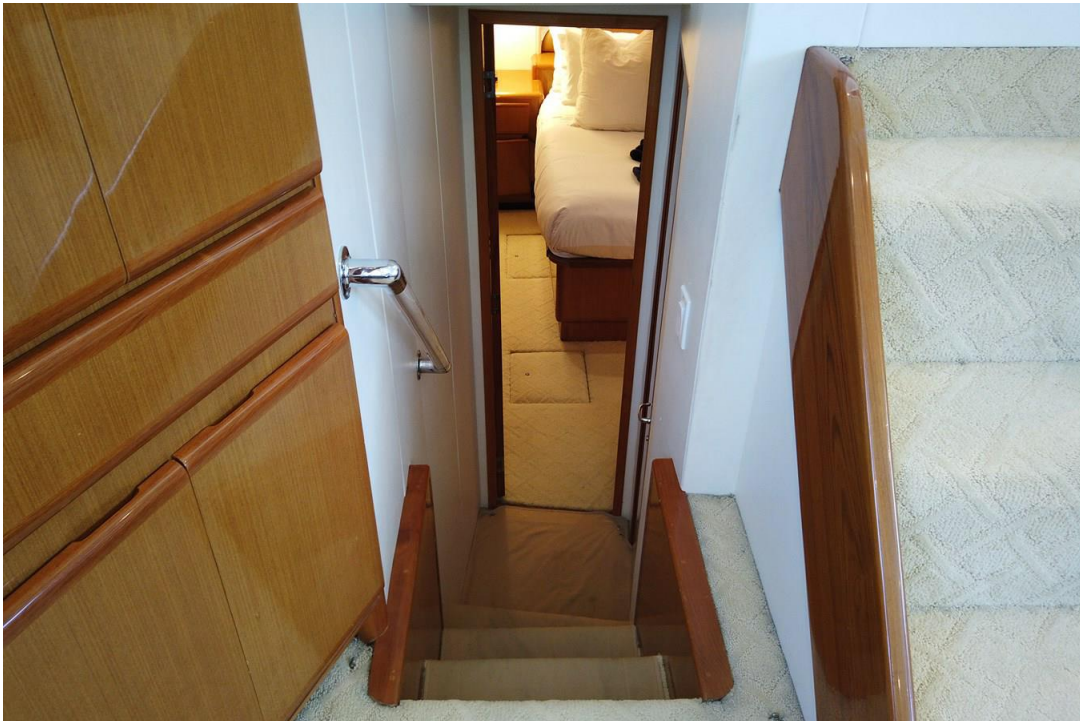
Galley



Dining



Master Stateroom Entry



Master Stateroom



Master Stateroom



Master Stateroom



Master Stateroom



Master Stateroom



Master Stateroom Head



Master Stateroom Head



Hallway to Staterooms



VIP Stateroom



VIP Stateroom



VIP Head



VIP Head



Twin Stateroom



Twin Head



Twin Head



Laundry



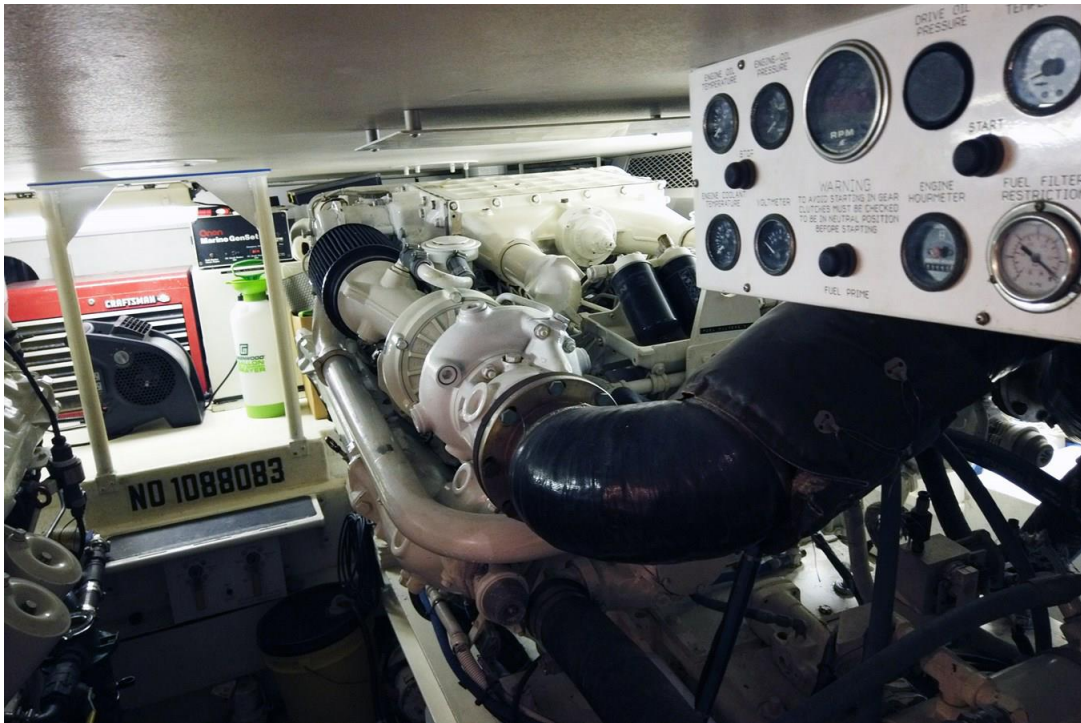
Engine Room



Engine Room



Engine Room



Engine Room

