



MY TIME OUT



2001 CABO Cabo 47

LOA: 47' (14.33m)
Beam: 15' 8" (4.78m)
Max Draft: 4' (1.22m)
Speed: Cruising 28.00 Knots
Max 32.00 Knots

VAT Paid:

Build Year/Model Year: 2000 / 2001
Builder: CABO
Type: Motor Yacht
Flybridge
Price: \$324,000 USD
Location: Fort Lauderdale, Florida
United States

Additional Specifications For MY TIME OUT:

LOA:	47' (14.33m)	Delivery/Model	2001
Beam:	15' 8" (4.78m)	Year:	
Max Draft:	4' (1.22m)	Year Built:	2000
Hull Material:	Fiberglass	Builder:	CABO
Hull Config:	Modified V-Hull	Model:	Cabo 47
Tonnage:		Type:	Motor Yacht Flybridge
Speed:	Cruising 28.00 Knots Max 32.00 Knots	Top:	Hardtop
Fuel Capacity:	900.00 Gal	Engines:	800 HP,Twin, 2001, Inboard, Diesel, MAN, 2848LE,
Water Capacity:	100.00 Gal	Staterooms:	2
Flag:	USA	Heads:	2
Location:	Fort Lauderdale, Florida United States	Classifications:	
Price:	\$324,000 USD	MCA: ISM:	

Manufacturer Provided Description

The Cabo 47 is a top-tier flybridge yacht whose uncompromising design and quality construction place her in the leading ranks of mid-range sportfishing boats. Cabos have an enviable reputation for fit and finish and the 47 is a showcase of Cabo's engineering excellence. Built on a modified-V hull with cored hullsides and a well-flared bow, the cockpit is huge—largest of any sportfishing boat in this class—and comes with a full array of fishing amenities including an excellent bait prep center, in-deck fish boxes and a lighted 50-gallon transom livewell. The original galley-up, two-stateroom floorplan was arranged with the master stateroom forward, twin berths in the guest cabin, and separate stall showers in both heads. It would be difficult to find a better engineered engine compartment. Twin 800hp MANs cruise at 28 knots (32–33 knots top).

General Specifications

- Cabo 47 Fly Bridge
- Cruising Speed: 28 kn
- Beam: 15' 8"
- Hull Material: Fiberglass
- Max Draft: 4'
- Man Motors 2848LE, 800 horse power
- Westerbeke 12.5 Upgrade Generator
- Fuel Tank: 1 x 900|gallon
- Fresh Water: 1 x 100|gallon
- Single Berths: 6
- Double Berths: 1
- Cabins: 2
- Heads: 2
- Complete Full Service on both motors Jan 2019
- Eskimo Ice Maker
- Sea Recovery System 600 Per Day
- Oil Change System
- Freshly Painted
- Single Lever Engine Controls
- Dripless Shaft Seals

Salon

- Electrical Distribution Panel
- Overhead Lighting
- Crusair Thermostat
- Combo-Matic 200 Clothes Washer/Dryer
- Flatscreen TV
- Teak Table
- L Shaped Couch With Storage Underneath
- L Shape Dinette
- Tinted Glass
- Teak and Holly Flooring with carpet

Galley

- The Galley is on the port side Forward
- Corian Counter Tops
- Teak and Holly Flooring
- Teak Cabinets
- 2 Sub-Zero Refrigerators/Freezer
- Princess Stove Glass Cook Top
- Garbage Disposal
- Overhead Lighting
- Large Storage Under Floor
- Sharp Carousel Microwave
- 120 Vac Duplex Outlets GFI Protected
- Glacier Marine Refrigeration Unit
- Trash Compactor

Master Cabin

- Island Queen Berth
- Flatscreen TV
- Hanging Locker
- Teak Cabinets
- Storage Beneath Berth
- Bomar Overhead Deck Hatch
- Crusair Thermostat
- Rod Storage

Master Head

- Large Shower
- Corian Vanity with Sink
- Mirrored Medicine Cabinet
- Bomar Overhead Deck Hatch
- 110v GFI Outlets

Guest Stateroom

- Twin Bunks Starboard Side
- Crusair Thermostat
- Teak Drawers Beneath The Bunk
- Teak Hanging Lockers
- Queen Berth Aft

Guest Head

- Large Shower
- Mirrored Medicine Cabinet
- 110v Outlets
- Teak Storage Cabinets

Engine Room

- Fire And Bilge Alarms
- Fire Extinguishing System Automatic
- Aircraft Type Braided Fuel Lines
- 3 Bilge Pumps 24v Type Automatic
- Oil Change System for the motors and the generator plus transmission
- Engine Room Insulation for noise
- Dripless Shaft Seals
- Engine Room Synchronizer/Trolling Valves
- Locking Door for the Engine Room

Deck Accessories

- Custom Anchor Roller System
- Electric Windless 24v with 25 Ft of Chain and 250 Ft of Nylon Rope
- 35 Lb Fortress Anchor FX 37
- Custom Deck Rail
- Hot And Cold Hand Held Shower on the Aft Deck
- Bench Seat Forward of the Console/Helm Area
- Storage Boxes Under Gunwale
- Bait Prep Station Port Side Includes a Sink and a Cutting Board
- Lighting under the Gunwales
- Fish Boxes Insulated with Pump Out Pumps
- Combing Bolsters Fishing Area
- Molded 50 Gallon Baitwell Tank in the Transom
- Storage Area for your Rods and Cleaning Brushes and Gaffs Port and Starboard Side
- Fresh/Saltwater Wash Down Outlets on the Portside

Exclusions

Exclusions are to include but are not limited to owner's personal belongings. A detailed list of exclusions to be provided at time of sale upon written request from buyer.

****EIAPP Certificates do not convey with the sale of this vessel.****

Disclaimer

The Company offers the details of this vessel in good faith but cannot guarantee or warrant the accuracy of this information nor warrant the condition of the vessel. A buyer should instruct his agents, or his surveyors, to investigate such details as the buyer desires validated. This vessel is offered subject to prior sale, price change, or withdrawal without notice.

Main Salon



Salon Seating



Galley Dining



Galley



Galley



Galley



Hallway to Staterooms



Forward Stateroom



Forward Stateroom



Head



Head Shower



Bunk Room



Mezzanine



Mezzanine



Mezzanine



Switch Cabinet



Aft Controls



Mezzanine Storage



Port Storage



Port Ice Maker



Fighting Chair



Fighting Chair



Overhead Fighting Chair



Upper Helm Chairs



Helm



Helm



Helm Seating



JL Speakers



Bow



Bow



Anchor



Rocket Launcher



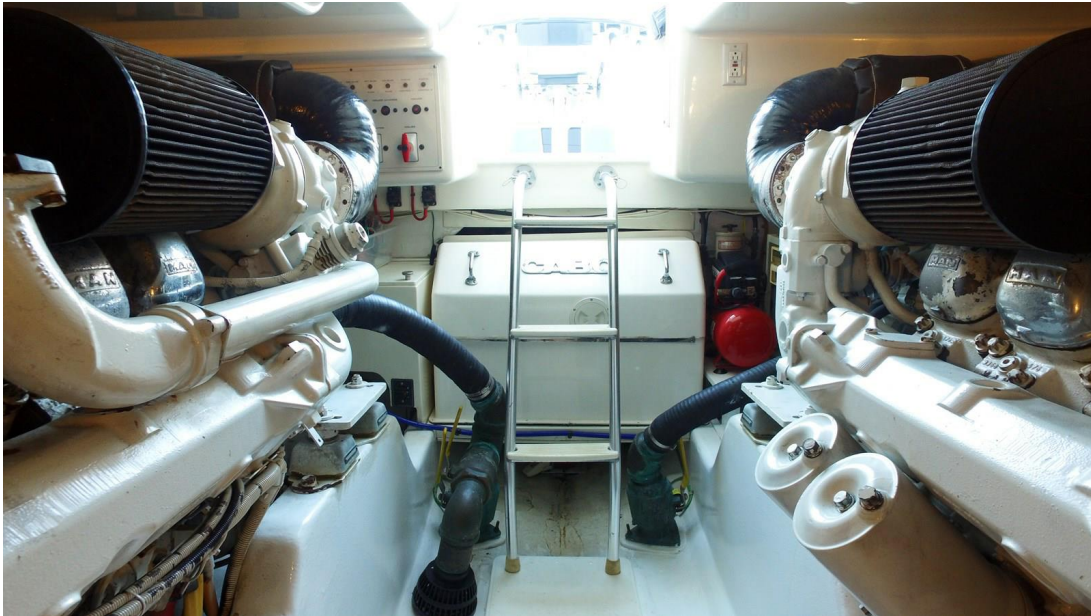
Rocket Launcher



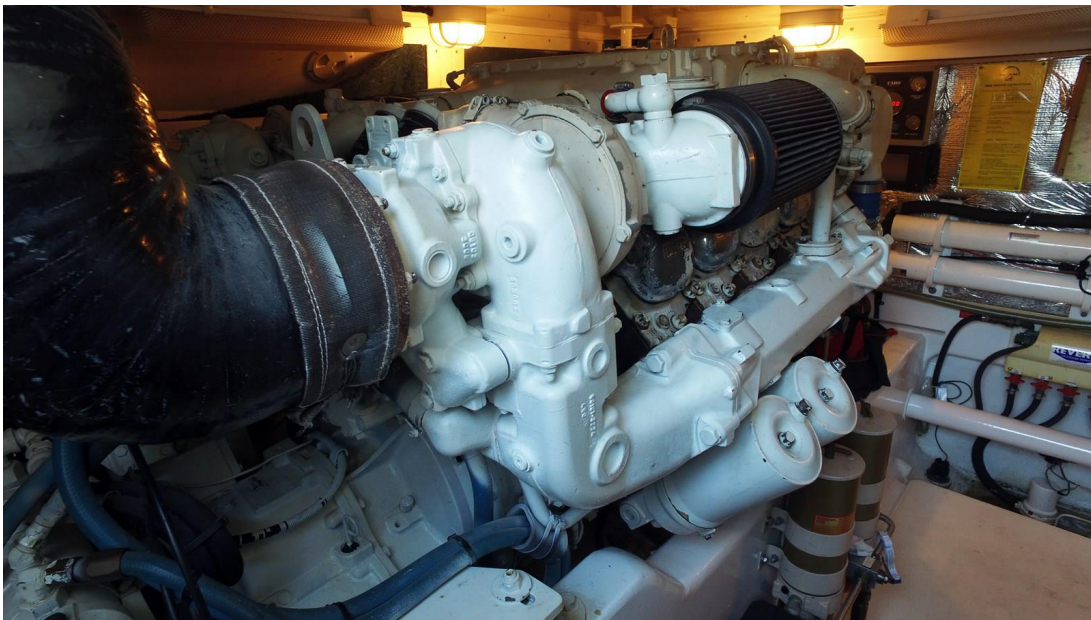
Engine Room



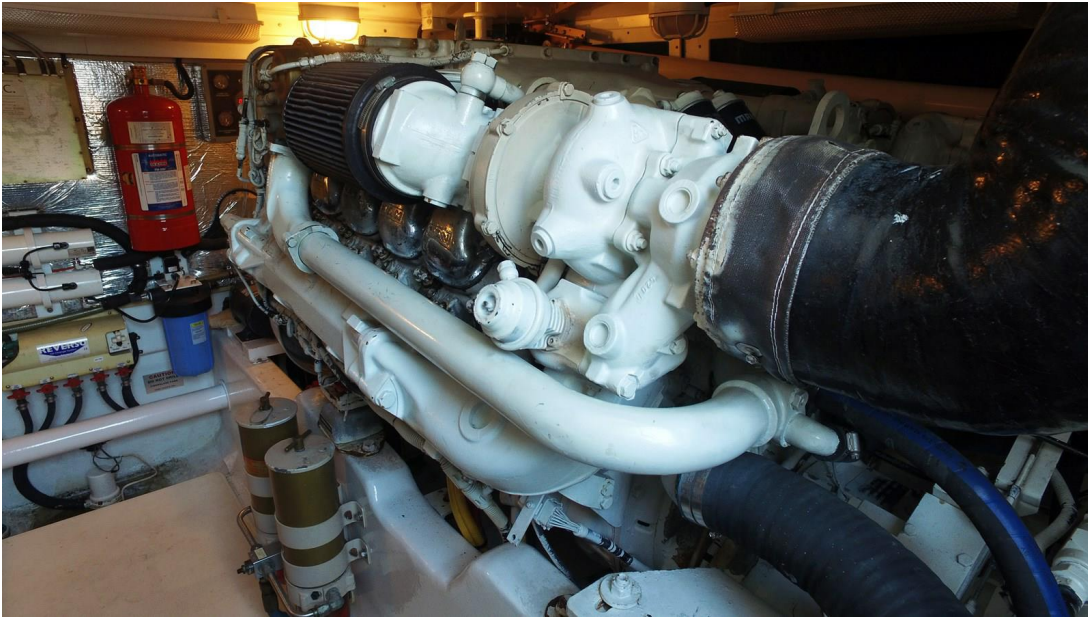
Engine Room



Port Engine



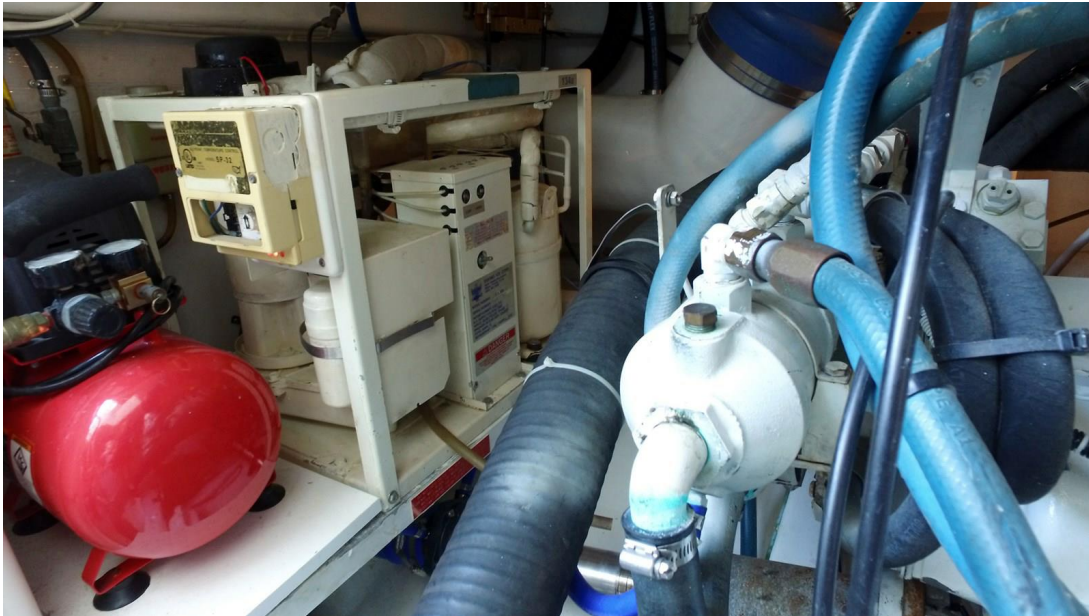
Starboard Engine



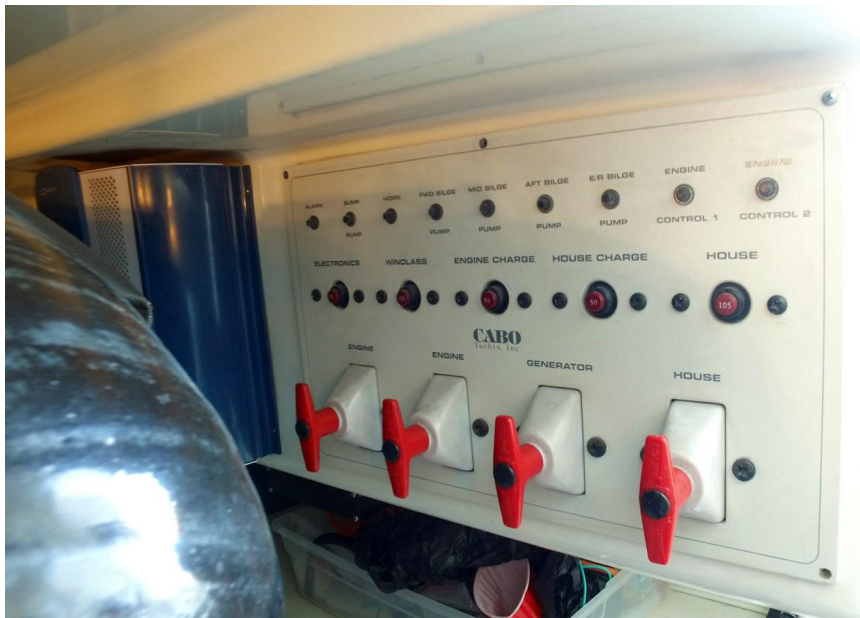
Chiller



Engine Room



Engine Room



Transom



Port Running Shot

